



Community Legacy Committee

Project Summary



vision

a vibrant place for everyone to gather, play, and learn

mission

working together with community partners to create a vibrant and inclusive destination for individuals and families to engage in active learning and play for life



values

- diversity
- inclusivity
- accessibility
- sustainability
- play for life
- active living
- safety
- community connectedness
- well-being of all



steering committee

- Tom Mandich – chair
- Kathy Doherty-Masters – vice-chair, community partner
- John Dietrich – principal
- Frank Wittmann – vice principal
- Anne Facey – community partner
- Jonathan Wright – teacher
- Chris Gehan – community partner



partnerships

- Waterloo Catholic District School Board
- City of Kitchener
- Kitchener Public Library
- Family & Child Services
- Waterloo Region Catholic Schools Foundation
- Supported by Healthy Schools, Region of Waterloo Public Health
- Kitchener Minor Hockey Association
- Waterloo Region Boxing Academy

ACTION PLAN

create a master plan
& build relationships

collect data (e.g. land surveys,
demographics, environmental scan)

survey community & partners
(neighbourhood associations)

VISION

Phase 1: 2 years → 2020

- multi-use court
- greenhouse
- fitness stations/green gym
- outdoor library common area
- memory garden with Vimy Ridge memorial oak tree



Phase 2: 5 years → 2023

- 400m track and turf field
- shade structures and trees
- community vegetable garden
- outdoor classroom



8 years → 2026

comprehensive community outdoor
athletic facility and cultural centre:

- community and school use
- year-round use
- covered stands/press box
- washrooms/dressing rooms

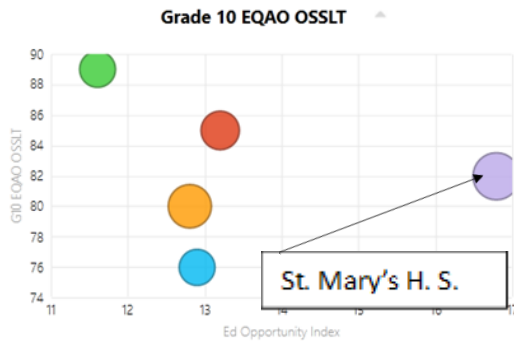




Appendix A

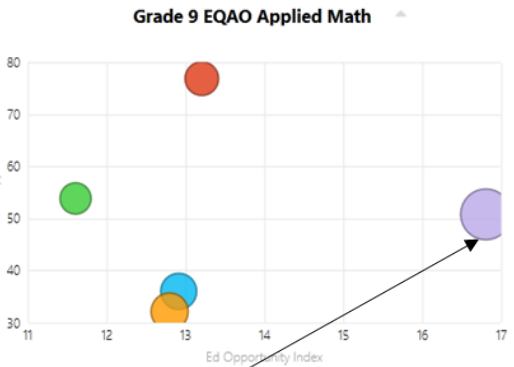
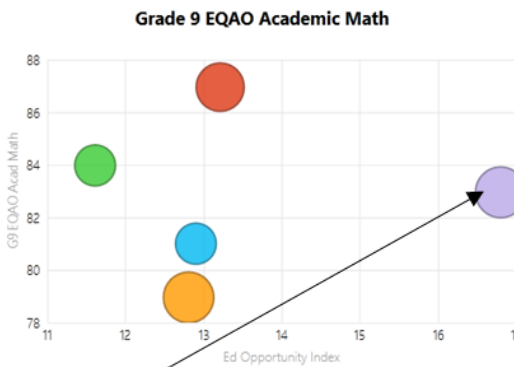
St. Mary's HS compared to the other 4 High Schools in our Board

Gr. 9 Math EQAO/Gr. 10 OSSLT and Education Opportunities Index



To analyse the data in this view, try these techniques:

- Apply the filters on the far right to identify criteria for selecting schools.
- Identify schools in the scatter plots.
- Scatter plots show how Grade 9 EQAO Academic and Applied math and Grade 10 OSSLT results relate to the Education Opportunities Index for the school.
- To expand each chart, use the pop out feature at the top right corner.
- To further explore school data, hover over or click scatter plot points.



St. Mary's H. S.

Education Statistics & Analysis Branch, Ontario Ministry of Education
for internal uses only and not in any way that could lead to the

St. Mary's H. S.

could not be identified.

How is the Education Opportunity Index (EOI) calculated?

The Education Opportunities Index (EOI) combines several socio-economic status (SES) variables that have been found to influence student achievement into a composite index that measures SES-related factors that impact opportunities experienced by students in a school.

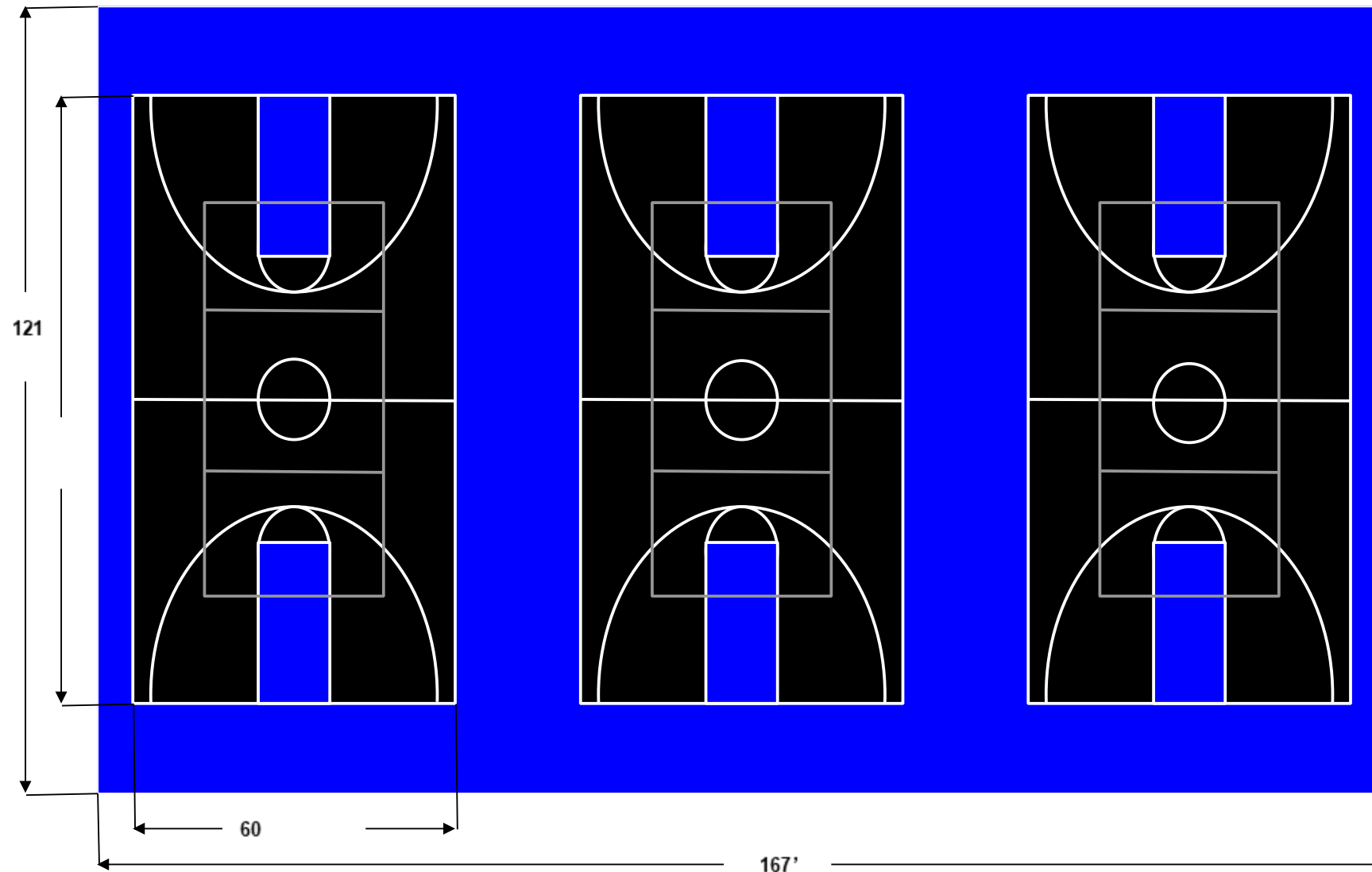
A higher EOI value means that students are experiencing fewer/lower educational opportunities and a lower EOI value means that students are experiencing higher educational opportunities.

Five socio-economic variables comprise the EOI. Four of the variables come from Statistics Canada.

1. Lone Parent Family: The percentage of school aged children in a lone parent family from the 2011 Census (mandatory form 1) weighted by 2015-2016 (preliminary) enrolment
2. Parental Education: The percentage of school aged children whose parents do not have a certificate, diploma or degree or who have no more than a secondary school diploma from the 2011 National Household Survey weighted by 2015-2016 (preliminary) enrolment
3. Family Income: The percentage of families with income below the After-Tax Low Income Measure (AT-LIM) that have school aged children from tax file data weighted by 2015-2016 (preliminary) enrolment
4. Income Source: The percentage of families with no earned income that have school aged children from tax file data weighted by 2015-2016 (preliminary) enrolment
5. Immigration: Very recent newcomers arriving in Canada within the past five years; derived from administrative data in the Ontario School Information System (OnSIS)

121' x 167' Triple Basketball Court System by FLEX COURT®

Actual Concrete Pad



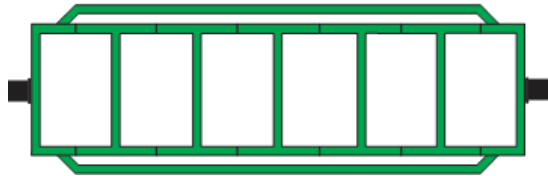
stayFIT⁺

BODY WEIGHT⁺

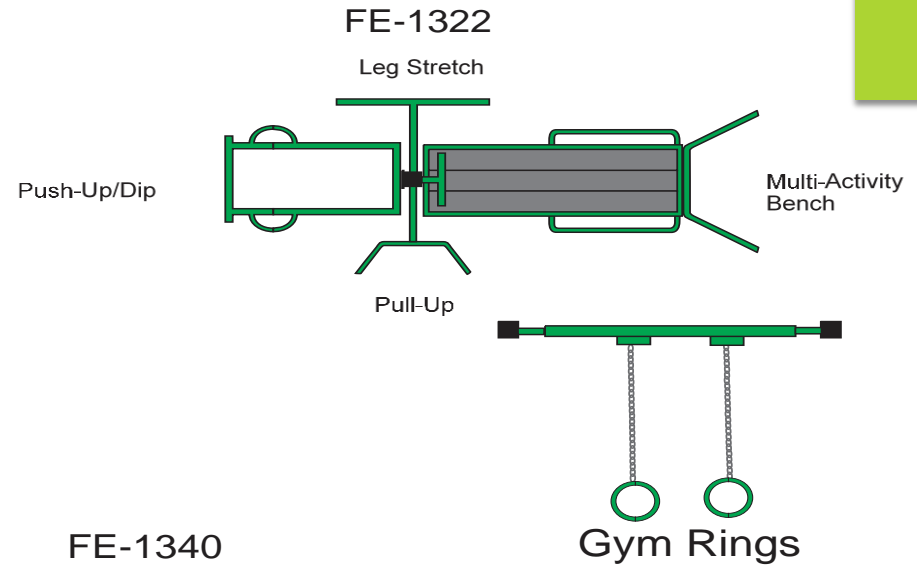
Multi-Use Pole



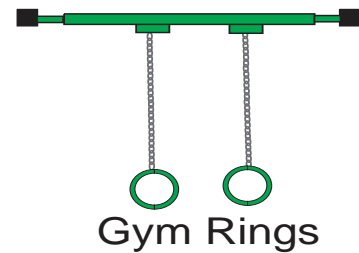
#1310 Overhead Ladder



- Battle Ropes
- Suspension Trainers
- Resistance bands



FE-1340
Back Extension

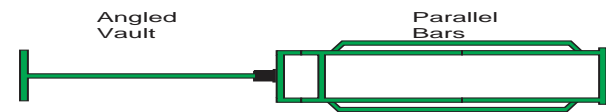
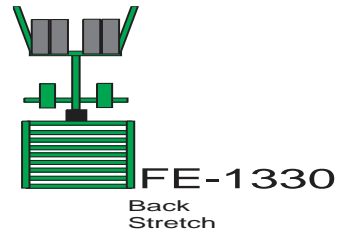


Tricep Dip

FE- 1318

Pull-Up Bar
w/Double
Handles

Pull-Up/
Chin-Up



#1310

catch master disc golf basket



signage



KPL Community Hub/Garden Space

picnic tables, benches and garbage bins



a vibrant place
for youth to:

- eat lunch
- read
- access WIFI





Community Legacy Committee

Project Summary