

COURSE SELECTION PRESENTATION 2022

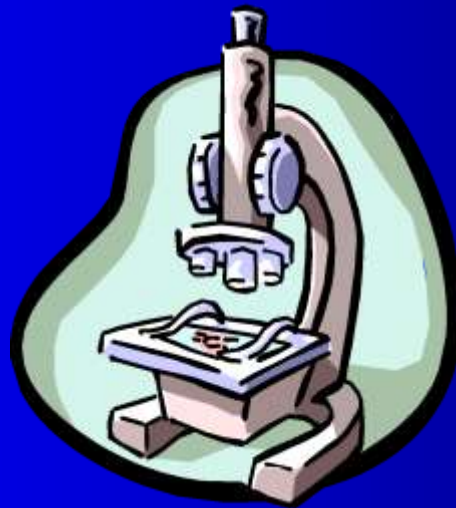
Have you signed up for the Gr. 9 Google Classroom?
6hy5i74



GRADE 9 INTO 10

TYPES OF COURSES

- ACADEMIC
(including Pre-AP
courses)
- APPLIED
- ESSENTIAL
- OPEN



Gr. 10 Pre-Ap Courses

- English – ENG2DP
- Math – MPM2DP
- Science – SNC2DP
- French – FSF2DP

COURSES FOR NEXT YEAR

- Religion
- English
- Math
- **Science** (SNC1LI students will take 2nd science in grade 12, and have 3 electives next year)
- History
- Civics/Careers
- + 2 Electives



OSSD REQUIREMENTS

- 4 English
- 3 Math (1 senior)
- 2 Science
- 1 French
- 1 Arts
- 1 Phys Ed.
- 1 Canadian Geography
- 1 Canadian History
- .5 Civics & .5 Careers
- 1 : Group 1
- 1 : Group 2
- 1 : Group 3
- Pass Gr.10 Literacy Test
- **40 hours of community service**

Important Note for MATH

Although there are 3 math courses, including gr. 11 math required for high school diploma - there are many programs at **BOTH** university and college that require gr. 12 university or college level math



40 Hours of Community Service



www.volunteerwr.ca

Student Supports

Guidance

- Academic Planning
- Course Calendar
- **Course Selection**
- **Community Service**
- Post Secondary & Career Planning
- School and Community Supports

NEW Submit your community service hours using the online **Community Involvement Activity Record form**

STUDENT INFORMATION

First Name of Student: *

Last Name of Student: *

Username: *

e.g. 12345abc@wcdsb.ca

(last five numbers of student number and first three letters of last name in lowercase @wcdsb.ca)

Current High School: *

STUDENT ACKNOWLEDGEMENT

*

I confirm that I have read the Community Involvement Manual and understand my role and responsibilities.

*

I confirm that I have selected a WCDSB approved activity.

*

Did your chosen activity require Principal pre-approval as noted in the Community Involvement Manual?

Yes No

COMMUNITY INVOLVEMENT ACTIVITIES

ORGANIZATION: *

Name of Contact: *

Phone Number OR

Special Considerations for the 2021/2022 School Year:

During the 2021/2022 school year, students may count the following towards their community involvement hours:

- up to 10 hours of paid employment if a student is 14 years or older and **exercise** demonstrating how their work contributed to their community **completes a reflection**
- community involvement during school time, for example, walking a younger child to and from school or helping younger siblings with school work
- duties normally performed at home, for example, helping an elderly relative with errands or providing after school care for a sibling

DECISIONS ABOUT COURSES



- If you have not taken a **COMPULSORY ART OR PHYS. ED.** You should select one in grade 10
- **NOTE “PREREQUISITE”** as stated in course description

LOOK TO THE FUTURE!



- Plan BACKWARDS from graduation destination
- RESEARCH post-secondary destination requirements (helpful sites on next slide)
- Assess your interests, skills, values using **myBlueprint** (Who am I?)

Research sites for your future to help plan backwards


Apprenticeship - www.apprenticesearch.com

University - www.ontariouniversitiesinfo.ca

College - www.ontariocolleges.ca

WHAT ABOUT FAILED COURSES???



- If the failed course is in the compulsory category, the course **MUST BE REPEATED**, but not necessarily in same pathway
- Must choose this course in  for next year or you can go to summer school in July

ESL/ELD STUDENTS


- ESL/ELD students will get assistance to help them pick their courses in 





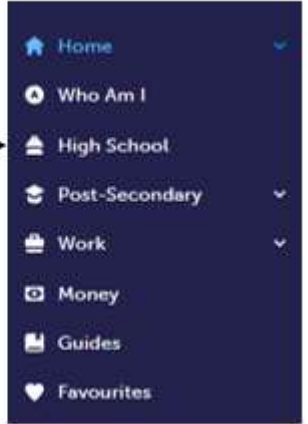
myBlueprint

- Go to St. Mary's website and click on the **myBlueprint** link.
- Enter your USERNAME (last 5 digits of your student I.D. # and first 3 letters of your last name. PASSWORD – same as SMH login

a) Select "High School" (Left Menu) 

b) Select "Add Plan" → Enter Your Plan Name:

Select your courses



The screenshot shows a dark-themed navigation menu with the following items: Home (with a star icon and a checkmark), Who Am I (with a person icon), High School (with a school building icon), Post-Secondary (with a graduation cap icon and a dropdown arrow), Work (with a briefcase icon and a dropdown arrow), Money (with a dollar sign icon), Guides (with a document icon), and Favourites (with a heart icon).

Video link on how to choose your
courses in myBlueprint:

[Click HERE](#)

Alternate

We have a large population here at St. Mary's, there is always a chance that you may end up on a waitlist for some courses you choose. Due to this, please choose you alternate course in myBlueprint carefully and submit your courses promptly in February.

Course selection notes:

- Extra course slot in planner for gr. 10 only, due to careers/civics, plus alternate course
- Any issues, such as too many/too little courses selected, missing pre-requisite and or mandatory course - go back to correct
- If you are going to summer school for a failed course, your guidance counselor may have to override in order for you to submit - send them an e-mail

Summer careers/civics

Career Studies - SUMMER EARNING (0.5 credit)

Grade 10 • GLC2OE • 0 Credits • Open

Career Studies (0.5 Credit)

Grade 10 • GLC2OH • 0.5 Credits • Open

Career Studies - SUMMER EARNING (0.5 credit)

 Grade 10  GLC2OE  0 Credits  Open

This course teaches students how to develop and achieve personal goals for future learning, work, and community involvement. Students will assess their interests, skills, and characteristics and investigate current economic and workplace trends, work opportunities, and ways to search for work. The course explores postsecondary learning and career options, prepares students for managing work and life transitions, and helps students focus on their goals through the development of a career plan.

Guidance Message

If you choose this summer elearn course, you must choose another credit to take its place in your next year.

You must register by filling out the google form below and checking off GCL2OE:

<https://tinyurl.com/6yyz...>

Important Notes

- BBI20I, BTT20I, AVI20Z, AMI20Z, AMV20Z, ADA20Z, LWSBOI, PAI20M & PAI20F are designed for students, who DID NOT TAKE business, visual arts, music, drama, Spanish, or gym in grade 9
- Gym classes with M or F in course code are for male or female
- You cannot earn a credit for both gr. 9 and gr. 10 classes

**Parent/Guardian must approve
course selection.**

**Video link on how to do this online
approval:**

[Click HERE](#)

Course Planner

- MUST have 9 courses indicated (8 if taking careers/ civics at summer school), plus alternate course
- SUBMIT
- PARENT/GUARDIAN APPROVAL IS MANDATORY
- DUE BY FEBRUARY 25, 2022

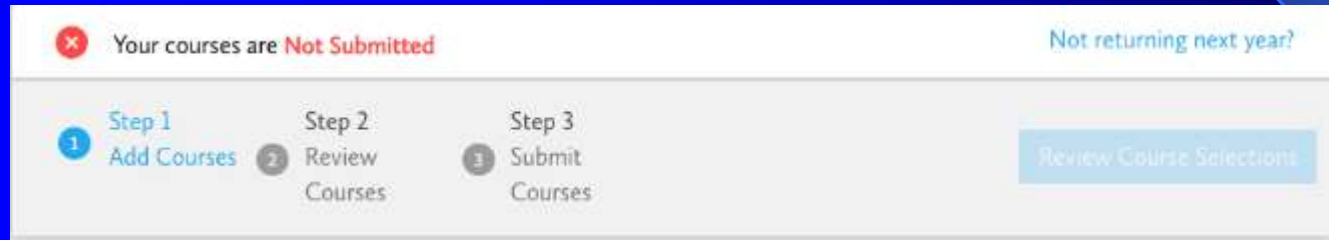


NOT RETURNING TO SMH?

Bye
Bye



Two Steps:



1. Click not returning – then get parent/guardian approval BY FEB. 25TH, 2022
2. Make an appointment to see your counsellor after March Break



myBlueprint IS OPEN
Feb. 1-until February 25th
to submit and lock in your
courses.

During this time: Log on, complete course selections and get parent approval

**SUBMIT COURSES EARLY
DON'T WAIT UNTIL LAST MINUTE**



Once You Submit & LOCK



You **CANNOT** go back &
make course changes

Choose courses carefully!

Guidance Alpha Caseloads

A-B, W-Z - Mark Cameron - mark.cameron@wcdsb.ca

C-E + international students - Joe Taranto -
joe.taranto@wcdsb.ca

F – Marta Mandich – marta.mandich@wcdsb.ca

G-K(+ELD) - Nancy Arruda - nancy.arruda@wcdsb.ca

L-O - Valerie Coates - valerie.coates@wcdsb.ca

P-R - Colleen Borman - colleen.borman@wcdsb.ca

S-V - Phil Lehmann - phil.lehmann@wcdsb.ca

Questions / Need Help?

- Come to computer lab room 234 on your lunch from Tues. Feb. 22 – Fri. Feb. 25

