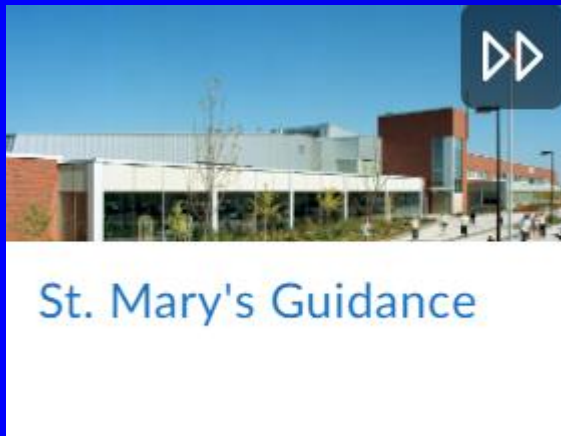


COURSE SELECTION PRESENTATION 2026

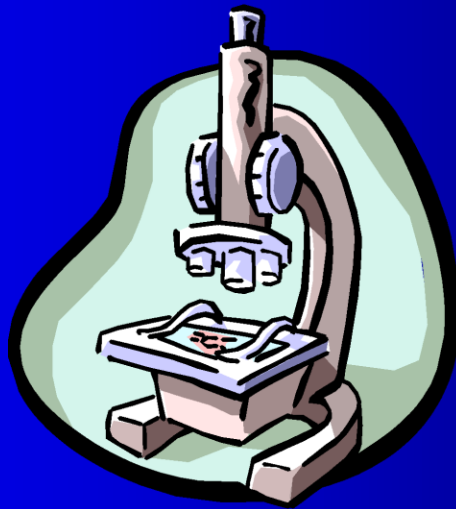
Guidance D2L page



GRADE 9 INTO 10

TYPES OF COURSES

- ACADEMIC (including Pre-AP courses)
- APPLIED
- LOCALLY DEVELOPED
- OPEN



Gr. 10 Pre-Ap Courses (academic)

- Math – MPM2DP
- Science – SNC2DP
- French – FSF2DP

COURSES FOR NEXT YEAR

- Religion
- English
- Math
- **Science** (SNC1LI students will take 2nd science in grade 12, and have 3 electives next year)
- History
- Civics/Careers
- + 2 Electives

Notre Dame students

- Students that will be attending the Notre Dame Catholic Secondary school next year will see courses for this school in your myBlueprint account, and your courses will get submitted to Notre Dame.

OSSD REQUIREMENTS

30 CREDITS INCLUDING 2 ONLINE CREDITS

(Opt-out form)



- 4 English
- 4 Religion
- 3 Math (1 senior)
- 2 Science
- 1 French
- 1 Arts
- 1 Phys Ed.
- 1 Geography
- 1 History
- 1 Technology(gr.9/10)
- 0.5 Civics & 0.5 Careers
- 1 Credit from STEM group
- 9 Elective credits

STEM GROUP

- Business studies
- Computer studies
- Co-operative education
- 4th Math
- 3rd Science
- 2nd Technology

- **Literacy requirement**
- **Financial Literacy test (70+% in gr. 10 math)**
- **40 hours of community service**

40 Hours of Community Service



www.volunteerwr.ca

Student Supports

Guidance

- Academic Planning
- Course Calendar
- **Course Selection**
- **Community Service**
- Post Secondary & Career Planning
- School and Community Supports

Need volunteer hours? www.VolunteerWR.ca is a good place to search for safe activities that are eligible for Community Service Hours

NEW Submit your community service hours using the online **Community Involvement Activity Record form**

STUDENT INFORMATION

First Name of Student: *

Last Name of Student: *

ORGANIZATION: *

Name of Contact: *

Phone Number OR Email Address of Contact: *

Description of Activity: *

Number of Hours: *

Completion Date: *



Documentation Upload *

*Please upload either a certificate or signed document that confirms the hours with the listed community partner

Upload

DECISIONS ABOUT COURSES



- You **MUST** take a **COMPULSORY TECHNOLOGY** course in gr. 10 if you didn't take it in gr. 9
- If you have not taken a **COMPULSORY ART OR PHYS. ED.** You should select one in grade 10
- **NOTE "PREREQUISITE"** as stated in course description

LOOK TO THE FUTURE!



- Plan BACKWARDS from graduation destination
- RESEARCH post-secondary destination requirements (helpful sites on next slide)
- Assess your interests, skills, values using **myBlueprint** (Who am I?)

Research sites for your future to help plan backwards

Apprenticeship - www.apprenticesearch.com

University - www.ontariouniversitiesinfo.ca

College - www.ontariocolleges.ca

WHAT ABOUT FAILED COURSES???



- If it's a compulsory course, you must choose this course in **myBlueprint** for next year, or you can go to summer school in July for 1 course, if it's offered.

STUDENTS in ESL/ELD classes


- You will get assistance to help pick your courses in [myBlueprint](#)





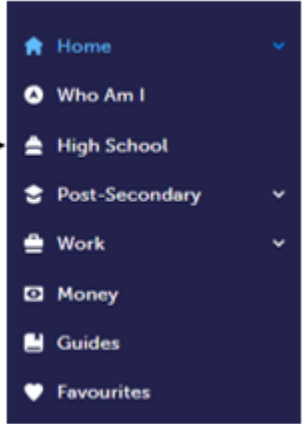
myBlueprint

- Go to St. Mary's website and click on the **myBlueprint** link.
- Enter your USERNAME (last 5 digits of your student I.D. # and first 3 letters of your last name. PASSWORD – same as SMH login

a) Select "High School" (Left Menu) 

b) Select "Add Plan" -> Enter Your Plan Name:

Select your courses



The screenshot shows a dark blue navigation menu with the following items: Home (with a star icon and a dropdown arrow), Who Am I, High School (with a building icon), Post-Secondary (with a graduation cap icon and a dropdown arrow), Work (with a briefcase icon and a dropdown arrow), Money (with a dollar sign icon), Guides (with a document icon), and Favourites (with a heart icon).

Grade 9 Current Year	Grade 10 Next Year	Grade 11 Plan Ahead	Grade 12 Plan Ahead
English - Destreamed ENL1WI • 1 Credit	+ English	+ English	+ English
Mathematics - Destreamed MTH1WI • 1 Credit	+ Mathematics	+ Mathematics	+ Religion
Science - Destreamed SNC1WI • 1 Credit	+ Science	+ Religion	+ Course
Exploring Canadian Geogr... CGC1WI • 1 Credit	+ History	+ Course	+ Course
French - One-stream FSF1DI • 1 Credit	+ Careers	+ Course	+ Course
Religious Education HRE1OI • 1 Credit	+ Civics	+ Course	+ Course
Healthy Living and Rhyth... PAR1OI • 1 Credit	+ Religion	+ Course	+ Course
Technology and the Skille... TAS1OI • 1 Credit	Hospitality and Tourism TFJ2OI • 1 Credit		+ Course
	+ Course Alternates + Alternate		

THIS COURSE

IS CAPPED .

**You may get a message to
pick another course.**



Search Courses...

Filters

Grade 10

English

3 Results Found

English

Grade 10

English - Academic

Grade 10 • ENG2DI • 1 Credit • Academic

English - Locally Developed

Grade 10 • ENG2LI • 1 Credit • Locally Developed

English - Applied

Grade 10 • ENG2PI • 1 Credit • Applied

Grade 9
Current Year

Grade 10
Next Year

Grade 11
Plan Ahead

Grade 12
Plan Ahead

English - Destreamed
ENL1WI • 1 Credit

English - Academic
ENG2DI • 1 Credit

Mathematics - Destreamed
MTH1WI • 1 Credit

Mathematics

Science - Destreamed
SNC1WI • 1 Credit

Science

Exploring Canadian Geograp...

History



Edit



Change



Delete

English

Religion

Course

Course

✖ Your courses are **Not Submitted**

[Not returning next year?](#)

1 Step 1
Add Courses

2 Step 2
Review Courses

3 Step 3
Submit Courses

Review Course Selections

Grade 9 Current Year	Grade 10 Next Year	Grade 11 Plan Ahead	Grade 12 Plan Ahead	
English - Destreamed ENL1WI • 1 Credit	English - Academic ENG2DI • 1 Credit	+ English	+ English	+
Mathematics - Destreamed MTH1WI • 1 Credit	Foundations of Mathemat... MFM2PI • 1 Credit	+ Mathematics	+ Religion	
Science - Destreamed SNC1WI • 1 Credit	Science - Applied SNC2PI • 1 Credit	+ Religion	+ Course	
Exploring Canadian Geogr... CGC1WI • 1 Credit	Canadian History Since W... CHC2DI • 1 Credit	+ Course	+ Course	
French - One-stream FSF1DI • 1 Credit	Career Studies (0.5 Credit) GLC2OH • 0.5 Credits	+ Course	+ Course	
Religious Education HRE1OI • 1 Credit	Civics and Citizenship (0.5... CHV2OH • 0.5 Credits	+ Course	+ Course	
Healthy Living and Rhyth... PAR1OI • 1 Credit	Religious Education HRE2OI • 1 Credit	+ Course	+ Course	
Technology and the Skille... TAS1OI • 1 Credit	Visual Arts - (For students ... AVI2OZ • 1 Credit	+ Course	+ Course	
	Launching and Leading a ...			

Graduation Indicator

16/30

REQUIRED CREDITS

16
Planned

0
Earned

16
Total

[View Progress](#)

SHSM Planner

Your school offers 11 Specialist High Skills Majors

[Learn More](#)

Pathway Eligibility



Add more course(s) to unlock

✓ Your courses are **Submitted** Jan 29, 2025, 11:50 a.m. EST

Send Approval Email

✕

Parent/Guardian Approval

Please add a parent or guardian email below for us to share your course selection.
Your parent/guardian will be asked to approve your course selections.

Parent/Guardian Email

Send Approval Email

Approve Course Selections



Don't approve of these Course Selections? **Reject Request**. If you reject this request, please follow up with your school's guidance counsellor about next steps.

Alternate Course

We have a large population here at St. Mary's, there is always a chance that you may end up on a waitlist for some courses you choose. Due to this, please choose an alternate course in myBlueprint carefully and submit your courses promptly in February.

Grade 10 Next Year
+ English
+ Mathematics
+ Science
+ History
+ Course
+ Civics
+ Careers
+ Religion
+ Course
Alternates
+ Alternate

Course selection notes:

- If you are going to summer school for a failed course, your guidance counselor may have to override your plan in order for you to submit - send them an e-mail

Summer careers/civics

Career Studies - SUMMER EARNING (0.5 credit)

Grade 10 • GLC2OE • 0 Credits • Open

Career Studies (0.5 Credit)

Grade 10 • GLC2OH • 0.5 Credits • Open

Career Studies - SUMMER EARNING (0.5 credit)

 Grade 10  GLC2OE  0 Credits  Open

This course teaches students how to develop and achieve personal goals for future learning, work, and community involvement. Students will assess their interests, skills, and characteristics and investigate current economic and workplace trends, work opportunities, and ways to search for work. The course explores postsecondary learning and career options, prepares students for managing work and life transitions, and helps students focus on their goals through the development of a career plan.

Guidance Message

If you choose this summer elearn course, you must choose another credit in myBlueprint to take its place in your next year.

Complete this registration form in order to be in the course this coming July:

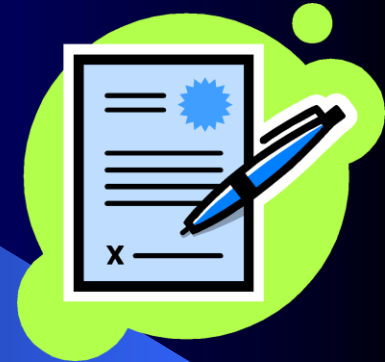
<https://tinyurl.com/ycxs..>

Important Notes

- AVI2OZ, AMI2OZ, AMV2OZ, ADA2OZ, PAI2OM & PAI2OF are designed for students, who DID NOT TAKE visual arts, music, drama, or gym in grade 9
- Gym classes with M or F in course code are for male or female
- You cannot earn a credit for both gr. 9 and gr. 10 classes

Course Planner

- All course slots **MUST** be filled up
- **SUBMIT**
- **PARENT/GUARDIAN e-mail APPROVAL IS MANDATORY**
- **DUE BY Feb. 27, 2026**



NOT RETURNING TO SMH?

Bye
Bye



Two Steps:

A screenshot of a web interface for course selection. At the top, a red error message reads 'Your courses are Not Submitted'. To the right of this message is a blue link that says 'Not returning next year?'. Below the error message is a progress bar with three steps: 'Step 1 Add Courses', 'Step 2 Review Courses', and 'Step 3 Submit Courses'. A blue button labeled 'Review Course Selections' is positioned to the right of the progress bar. A large green arrow with a black outline points from the right side of the screenshot towards the 'Not returning next year?' link.

1. Click not returning – then get parent/guardian approval BY Feb. 27, 2026
2. Make an appointment to see your counsellor after March Break



myBlueprint IS OPEN

Feb. 13 until Feb. 27

to submit and lock in your
courses.

During this time: Log on, complete course
selections and get parent approval

**SUBMIT COURSES EARLY
DON'T WAIT UNTIL LAST MINUTE
FIRST COME FIRST SERVE**



Once You Submit & LOCK



You **CANNOT** go back &
make course changes

Choose courses carefully!

Guidance Alpha Caseloads

A-Bo – Marta Mandich – marta.mandich@wcdsb.ca

Br-Gam - Joe Taranto - joe.taranto@wcdsb.ca

Gan-Lan - Nancy Arruda - nancy.arruda@wcdsb.ca

Lao-N – Colleen Galloway-colleen.galloway@wcdsb.ca

O-Sn – Valerie Coates (international + ICP students) –
valerie.coates@wcdsb.ca

So-Z – Karla Arkell – karla.arkell@wcdsb.ca

Students in ELD classes – Carrie Mage –
carrie.mage@wcdsb.ca

Grade 9 into 10 Course Selection Help Sheet

IN GRADE 10, PATHWAYS CHANGE TO:

- Academic
- Applied
- Locally developed
- Open

WHAT COURSES ARE COMPULSORY IN GRADE 10?

English

- ENG2D (Academic)
- ENG2P (Applied)
- ENG2L (Locally Developed)

Math

- MPM2D (Academic)
- MFM2P (Applied)
- MAT2L (Locally-Developed)

Science

- SNC2D (Academic)
- SNC2P (Applied)

History

- CHC2D (Academic)
- CHC2P (Applied)
- CHC2L (Locally-Developed)

Religion

- HRE2O (Open)

Civics & Careers

- CHV2O & GLC2O (Open)

In addition to the compulsory courses, you will select 2 elective courses. Students must have 8 courses.

OTHER IMPORTANT INFO

- Advanced Placement Options – [Click here](#)
- Math Pathways Chart – [Click here](#)
- Summer school – Registration opens in February/March. Be sure to sign up early.

CHOOSE YOUR COURSES

- Log onto myBlueprint.ca/waterloocatholic
- Select courses
- Submit and send email to parent/guardian for approval

YOU CAN SUBMIT YOUR COURSES FEBRUARY 13TH – 27TH, 2026.

GRADUATION CHECK-IN

- Do you have a plan to complete all of your compulsory/group credits?
- Do you have a plan to complete your Arts and Phys Ed credits?
- Have you planned your 2 online learning credits? Or will you be completing the [opt out form](#)?
- Have you completed some or all of your 40 hours of required community service? [Submit hours here.](#)

RESOURCES TO SUPPORT YOUR FUTURE PLANNING

Specialist High Skills Major
www.highskills.ca
College Information & Requirements
www.ontariocolleges.ca
University Information & Requirements
www.ontariouniversitiesinfo.ca
College and University Supports
www.transitionresourceguide.ca
www.ontransfer.ca
Apprenticeships
www.apprenticesearch.com

Questions / Need Help?

- Come to the computer lab on your period 3 lunch during 3rd week of February for help from guidance counselors. **KEEP AN EYE ON EAGLE VISION FOR DATES!**

